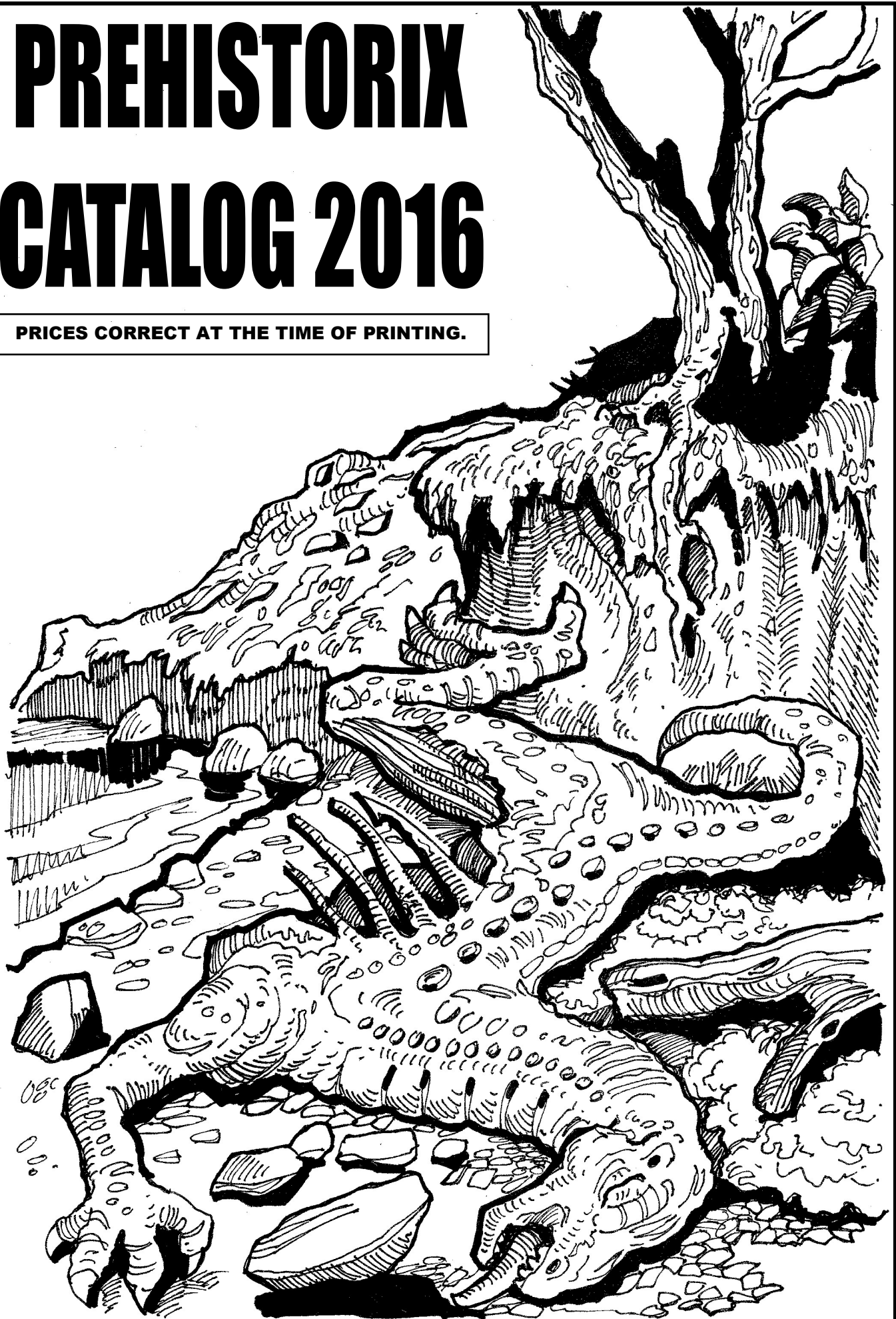


PREHISTORIX CATALOG 2016

PRICES CORRECT AT THE TIME OF PRINTING.

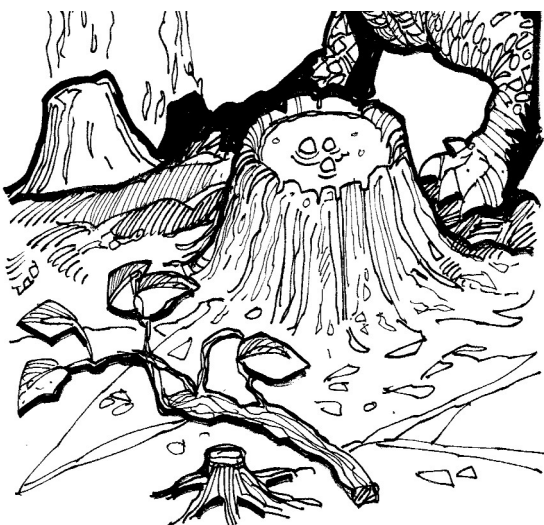


ITEM OO1 Standard Ankylosaurus Base Recast.
for Aurora Prehistoric Scenes 'Armored Dinosaur',
To replace missing half. \$15.99

This item is a high quality, resin, reproduction of the missing half of the original base from the Aurora Armored Dinosaur. Aurora only offered this part for a short time. Subsequent re-releases by other companies are also missing this piece. Keying in with the hard to find Allosaurus base, it is a detailed component featuring a realistic volcanic vent and a fallen sapling.

ITEM OO2 Deluxe Ankylosaurus Flickering Base.
for Aurora Prehistoric Scenes 'Armored Dinosaur',
featuring flickering lava effect. \$25.99

Prehistorix presents to you a unique product. This is not only the base half that's been missing from the 'Armored Dinosaur' kit for a long time, it actually flickers and glows like a real volcanic vent! Its easy to assemble and a must have product for any Prehistoric Scenes collector.



ITEM OO3 Sail Back Reptile Base Recast.
for Aurora Prehistoric Scenes 'Sail Back Dinosaur',
To replace missing half. \$14.99

This item is a high quality, resin, reproduction of the missing half of the original base from the Aurora Sail back reptile. It features a pool and a moulded stand for a palm tree from the Jungle Swamp Kit. This piece was not re-issued in the recent run of the Revell Dawn of Time series or later Monogram versions of the Aurora original. Its must have item for any collector who wishes to display their Dimetrodon in all its glory .

ITEM OO4 Jungle Swamp Base Recast.
To replace discontinued kit. \$13.99

This item is a high quality, resin, reproduction of the original base from the Aurora Jungle Swamp. This kit has never been re-issued and leaves a gaping hole in the collections of many enthusiasts. Its absence is especially apparent when setting up the complete series together. Hard to find, even on auction sites, the original kit commands ridiculously high prices. This is a guaranteed and dollar friendly way of working towards a complete collection. Keep your eye on P/S Great products for more Jungle Swamp items!

ITEM 005 Jungle Swamp Tree Stand.
An original 'Prehistorix' part. \$3.99

This original quality resin cast part is designed to provide a steady base for the large Jungle Swamp tree. This allows the tree to be placed anywhere next to, or on the bases, of any of your scenes.

**ITEM 006 Deluxe Flickering Campfire
for Aurora Prehistoric Scenes 'Cave'.**
An original 'Prehistorix' part. \$22.99



P/S Great's 'Deluxe Glowing Campfire' is a unique product that was designed to enhance the Aurora Prehistoric Scenes 'Cave'. It makes a great centre-piece and brings life and authenticity to the kit. You may also wish to use this to enhance other Aurora products where a fire is needed. Even Doctor Deadly's dungeon needs to be warmed up now and then!

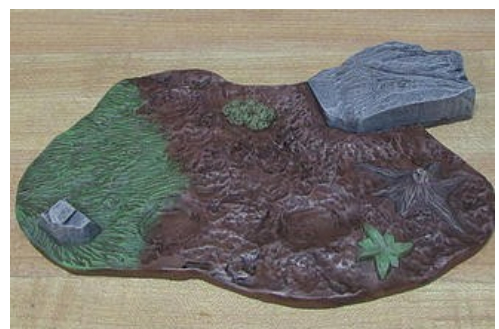
ITEM 007 Sabre Toothed Tiger Base Half Recast.
for Aurora Prehistoric Scenes 'Sabre Toothed Tiger',
To replace missing half. \$14.99

For a while, Aurora issued the Sabre Toothed Tiger with a two part modular base. However this was short lived and the base became an extremely rare item. Now you can have a high quality resin copy to add to your collection, enabling you to display the tiger to its greatest advantage.



ITEM 008 Pyro-Lindberg Ankylosaurus Base
An original Prehistorix part. \$10.99

Before Aurora there was Pyro, Life Like Hobbies dinosaur kits, later re-issued by Lindberg. Many of the older kits had bases included, along with a few cavemen thrown in. Their Ankylosaurus never had a base of its own. Now it has, a fantastic piece of terrain, modelled in the Aurora style, but tailored to fit the living tank's very own flat and heavy feet. Go on, rediscover the beauty of this kit and give the little monster its very own base complete with rocks and tree stump. After all he's been around such a long time he really does deserve it!



ITEM 009 Deluxe Lighted Torch for Aurora Prehistoric Scenes 'Cave'.
An original 'Prehistorix' part with glow effect. \$15.99



The *Lighted Torch* is designed to bring to life a range of your model kits. This includes The Cave, The Neanderthal Man and the Cro-Magnon Man from the classic Aurora Prehistoric Scenes range.

The light is provided by an LED in a solid piece of plastic that glows like a bulb. However, it doesn't blow like a bulb or shatter like one either. The other advantage to PS GREAT lighted kits is that the LED does not give out any heat so there is no chance of the plastic melting or discolouring.

The classic Aurora Monsters and even Doctor Deadly and his friends would benefit from this piece of mood lighting, so don't stop at one! You can use this wonderful piece of technology in a range of dioramas.



Comes with a full set of instructions.

ITEM 010 Unlit White Resin Torch for Aurora Prehistoric Scenes 'Cave'.
An original 'Prehistorix' part. \$2.99

A quality, solid, resin cast of the above item without the glow effect which can be used with a range of figures or in many diorama applications.

**ITEM 011 Coelacanth Base Extension
for the Aurora Prehistoric Scenes 'Flying reptile'.
An original 'Prehistorix' part \$13.99**

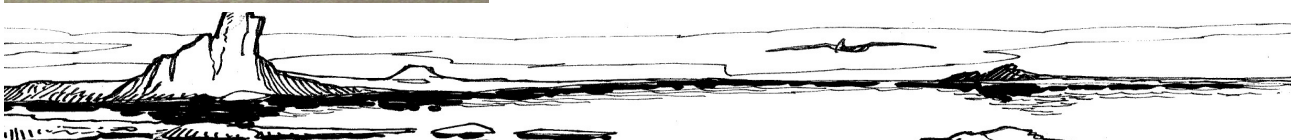
This model is designed to be used in conjunction with the Aurora Flying Reptile, one of the famous 'Prehistoric Scenes' kits from the early 1970s. This kit depicts a Coelacanth lying on a rock along with a dinosaur backbone. The original modular terrain base can be positioned alongside this kit to form a larger diorama. This 'Prehistorix' base can be added to the original kits without it obstructing the positioning of the other Aurora bases.



**ITEM 012 Four Nameplate Holders
for the Aurora Prehistoric Scenes.
Original 'Prehistorix' parts \$20.99 or \$4.99 each**



These name plate holders are designed to hold the nameplates supplied with the original Aurora Prehistoric Scenes model kits released in the 1970s. The 'Jungle swamp' was the only exception. The revolutionary modular terrain bases that also came with the kits did not have specific locations for the nameplates. These items can also be used with the re-issue nameplates in later kits from Monogram and Revell.



ITEM O13 Allosaurus Lava Base.
for Aurora Prehistoric Scenes 'Allosaurus',
To replace discontinued part. \$16.99

ITEM O14 Footprint Base Half Recast.
for Aurora Prehistoric Scenes 'Allosaurus',
to replace discontinued part. \$14.99

This is a replacement for one of the two base halves that have been missing from the 'Allosaurus' kit for a long time. This is the flat half which has the footprints.



ITEM O15 Sabre Tooth Prey Leg.
for Aurora Prehistoric Scenes 'Sabre Toothed Tiger',
to replace discontinued part. \$1.99

This is a replacement for one of those parts that are always lost. Somewhere there is a large pile of Tarpit rhino ears, giant bird chicks and sabre tooth prey legs. But no more worries. Prehistorix brings you a re-cast leg as good as the original.



ITEM O16 Mesozoic Hunting Ground.
an extension to the Aurora Allosaurus base,
Discontinued



This was an awesome eight part kit which is now retired. Not only did the base of this kit link to the Allosaurus base, it could replace it and be attached directly to the Armored Dinosaur. The kit includes a palm tree, a lizard and prey in the form of a Hypsilophodon. The leg of this creature could be detached and placed in the mouth of the Allosaurus. All these years you wondered why he was drooling. Now you know, he was drooling over The Mesozoic Hunting Ground by Prehistorix. Due to moulds wearing out we couldn't maintain quality so its now officially archived.



ITEM O18 Prehistoric Scenery—Foliage Kit 1.
For use with all the Aurora Prehistoric Scenes,
An original 'Prehistorix' model kit. \$12.99

This model is designed to be used in conjunction with any of the Aurora Prehistoric Scenes with a suitable base. The kit includes a large tree similar to that supplied with the spiked dinosaur kit and a terrain base to enable positioning where you like.

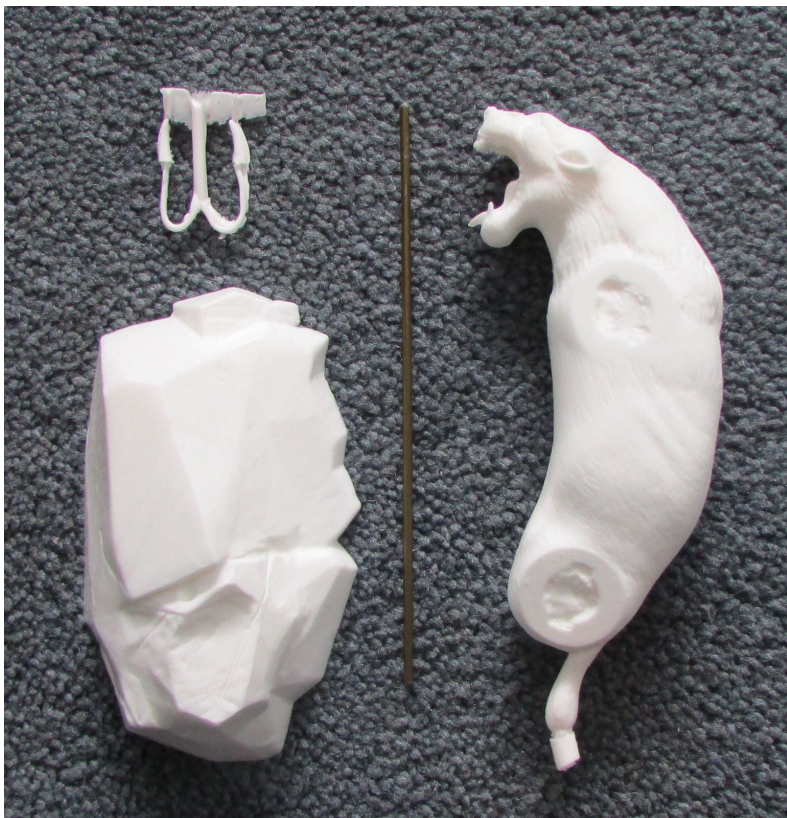
ITEM O19 Prehistoric Scenery Foliage Kit 2.
For use with all the Aurora Prehistoric Scenes,
An original 'Prehistorix' model kit. \$12.99

This kit is a selection of foliage based diorama elements designed to be placed on any suitable base to enhance the original Prehistoric scenes kits and the later re-releases.

It includes a medium cycad with a base, a trio of smaller cycads and a broad leaf shrub for ground cover. Also included is a tree trunk with a vine and a rotting palm trunk to add character to your scenes.



ITEM O20 AroarA Leaping/Impaled Sabre Tooth Tiger Body.
For use with the Aurora Sabre Tooth Tiger,
An original 'AroarA' part produced in conjunction with
'Prehistorix' \$17.99



This model is designed to be used in conjunction with the Aurora Sabre Tooth tiger model kit.

This sculpt puts the tiger's body in to a true leaping posture which can then be displayed in battle with the Cro-Magnon Man. This was one of the suggestions missing from the instructions of the Aurora kit, even though the original component was supplied with a spear slot in its chest; and a production drawing of an impaled tiger does exist.

The original kit was supplied with two sets of legs which allowed the tiger to be displayed in many different poses. This is an ideal way of using the spare legs.

This kit includes a cast resin rock base and metal rod to support the tiger. Both the tiger and the rock require drilling. The legs are not included in this kit.

ITEM O21 Cycad (2 Supplied)
For use with Pyro/Lindberg, AMT/Airfix Dinosaurs,
An original 'Prehistorix' part . Requires some simple assembly
\$4.99



Two Cycads per kit. A quality, solid, resin cast base with a flexible vinyl top moulded in green. These items bring life to your vintage Pyro/Lindberg kits or added realism to their Airfix/AMT counterparts. Suitable for any scale diorama they are another must have from 'Prehistorix'.



ITEM O22 The Prehistoric World, Jurassic Riverbed. Universal All terrain Base
An original 'Prehistorix' kit for use with Pyro, Airfix and Tamiya dinosaurs. \$34.99



This kit is in the style of the Pyro 'World of ; series and presents the modeller with the opportunity to display any of their dinosaur kits that doesn't currently have a base of its own. Designed for Pyro, Airfix/AMT, Tamiya and even Sleich, this kit is all you need to bring your model to life. As well as a two part resin base with rocks, ferns and even a snake moulded in to the surface, you also get a small conifer and a set of horsetails to complete your scene. Add to this a name plate holder and nameplate, a laminated colour backdrop and a vacuum formed stand. This really is a complete 'Prehistoric World'. Supplied in colour labelled box with instructions.

This kit has ten parts and will require assembly by an experienced modeller. It is not suitable for children.

The high quality resin cast base halves are super detailed. The name plate holder is cast in the form of a raptor skull and the plate itself is reversible being flat on one side and textured on the other.



ITEM O23 The Dinosaur Boneyard.

An original 'Prehistorix' kit for use with Aurora Prehistoric Scenes horned dinosaurs and general layout. TBA

This kit is designed to expand the original layout around the area of The Spiked Dinosaur and The Three Horned Dinosaur. It can be used as a stand alone scenic element, to give your bigger creatures a little more space. It can also be used as a base for the any of your dinosaurs with replacement heads that were recently available. As well as accommodating a baseless Allosaurus it could be used as a menagerie for the swamp creatures or other small animals that do not have a home of their own. As you can see from the photographs it is based around a horned dinosaur base format and fits exactly to the original layout. It uses original Aurora patterns for the foliage on the base and new 'Prehistorix' parts to complete the scene.

This kit has sixteen parts and will require assembly by an experienced modeller. It is not suitable for children.

The high quality resin cast base halves are nicely detailed and the range of accessories enables you to re-arrange the scene a number of times.



ITEM O24 PROTOCERATOPS BASE WITH HATCHLINGS.

*An original 'Prehistorix' kit for use with the classic Pyro/
Lindberg Protoceratops kit . \$14.99*

This is a two part resin cast kit with a high level of detail. Supplied with hatchling.

This kit is designed to enhance your enjoyment of your old Pyro kits. The base is complete with emerging hatchling, eggs, nest and plenty of terrain detail. Also supplied is a free standing hatchling which complements the style of the original kit perfectly.



ITEM O31 CORYTHOSAURUS BASE.

*An original 'Prehistorix' kit for use with the classic Pyro/
Lindberg Corythosaurus kit . \$14.99*

This kit is designed to enhance your enjoyment of your old Pyro kits. The base has plenty of terrain detail and represents the swamps and waterlogged forest where the many varieties of hadrosaur once lived. It complements the style of the original kit perfectly. This is a single piece, quality, resin cast item. A Prehistorix original.



ITEM O25 Baby Mammoth Peril.
An original 'Prehistorix' kit for use with Aurora Prehistoric Scenes Giant Mammoth and general layout. \$74.99

This kit has eleven parts and will require assembly by an experienced modeller. It is not suitable for children.

The high quality resin cast base halves are nicely detailed and the range of accessories enables you to re-arrange the scene a number of times .

This is our biggest kit to date and features a whole host of wonderful features. Firstly the original mammoth sculpt, on a super detailed base of its own, which dovetails perfectly with the original Aurora mammoth kit base. Then there is the tiger. The body is by Aroara, with a new set of re-sculpted legs so it can assume the crouching position. Combine the full tiger with its own interlocking base and a seriously big rock for it to climb on and you have a baby mammoth in peril from an apex predator of its day. Put the whole lot together and you have a truly awesome scene. Also included is a custom nameplate in the original Aurora style and as a free gift a 'Prehitorix' nameplate holder to help display your magnificent scene effectively. Crisp white resin parts begging to be assembled!



ITEM O26 Deluxe Sailback swamp Extension.
An original 'Prehistorix' kit for use with Aurora Prehistoric Scenes Sailback Reptile \$43.99



This is our biggest kit to date in terms of number of parts. It's a large, highly detailed, swamp base which attaches to the Sail-back terrain, complete with free standing ferns, horsetails, an Ichthyastega on a fallen log and a small palm and medium cycad on separate bases. This deluxe kit also includes all of the current creeping critters. This means you also get a large tree with a giant dragonfly, barrel cycad with a monster spider and a massive centipede with a tall tree stump. They all fit together to make a fantastic scene. The forthcoming Baryonyx will also link to this kit and allow further positioning of the creeping critters.

ITEM O27 Standard Sailback swamp Extension.
An original 'Prehistorix' kit for use with Aurora Prehistoric Scenes Sailback Reptile \$34.99

A smaller version of the above kit. Including a large, highly detailed, swamp base which attaches to the Sail-back terrain, complete with free standing ferns, horsetails, an Ichthyastega on a fallen log and a small palm and medium cycad on separate bases. No critters included. Ideal for a stand alone scene to extend your sail-back.



ITEM O28 Creeping Critters. Series 1.
An original 'Prehistorix' kit \$16.99

Includes a large tree with a giant dragonfly, barrel cycad with a monster spider and a massive centipede with a tall tree stump. Can be displayed on the larger PS bases as scenery.



ITEM O30 Woolly Rhino Calf

An original 'Prehistorix' kit for use with Aurora Prehistoric Scenes Tar-Pit and general layout. \$25.99

This kit has only two parts and will require only basic assembly an inexperienced modeller.

The high quality resin cast base can be used at various points around the Tar-Pit , and as a replacement for the Neanderthal man .

This is a simple yet classic kit. It features a whole host of wonderful details. Firstly the original rhino sculpt which is clearly the offspring of the behemoth trapped in the pit. Its large eyes and open mouth give the modeller plenty of opportunity to express themselves through paint. It has a super detailed base of its own, which dovetails perfectly with the original Aurora Tar-Pit kit base. Check out the tiger skull and the hand axe! Also included is a custom nameplate in the original Aurora style

**ITEM O32 NAME PLATE HOLDERS SERIES 2**

Original 'Prehistorix' items for use with the classic Prehistoric Scenes and 'Prehistorix' nameplates . \$20.99 (\$5.99 each)

These new name plate holders are designed to hold the nameplates supplied with the original Aurora Prehistoric Scenes model kits released in the 1970s. The first series have sold so well that we decided that new nameplate holders were needed for our kits which were released since. These items can also be used with the re-issue nameplates in later kits from Revell/Monogram and other nameplate holders that we ourselves supply in the classic style. The new nameplate holders are titled Cro-magnon Cave, Riparian Forest, Carboniferous Swamp and the Clamping Claw.

ITEM O33 'GIANT CLAW' BARYONYX

An original 'Prehistorix' kit for use with Aurora Prehistoric Scenes Sail-Back and general layout. \$84.99

This kit has eight parts and will require an experienced modeller to assembly it.

The high quality resin cast can be assembled in a number of poses and as a result may require a small amount of filler around the jaw area of the kit.

This is a major release from 'Prehistorix'. The eight part kit portrays a Baryonyx wading in a lagoon. This English spinosaur ate fish and other smaller dinosaurs and like other spinosaurs, it spent a lot of its time in the water. The three part modular terrain base can be linked to the end of the 'Aurora' Sail-Back rock section and the 'Prehistorix' Sail-Back Swamp Extension kit. The base features a landed prehistoric shark, animal skull and a foliated tree stump. These base sections can be used elsewhere on the layout as scenic elements.



The kit is designed so that the modeller can decide on the exact overall pose of the monster. The arms can be glued in a variety of positions and the jaw can be posed open or shut. There is some space on the body casting around the jaw to allow this and it may well require some filler if the jaws are modelled shut.

The forthcoming hatchery kit is designed to fit on the far side of the Baryonyx and extend the lagoon further to include other possible 'Prehistorix' aquatic scenes.

ITEM O34 T-REX NEST

An original 'Prehistorix' kit for use with Aurora Prehistoric Scenes General layout. \$120.00

This kit has fourteen parts and will require an experienced modeller to assembly it.

This is another major release from 'Prehistorix'. This fourteen part kit portrays a nest of young Tyrannosaurs. Two are already hatched and fighting over their prey, a lizard. A third is breaking out of a huge egg. This ground breaking kit is produced in conjunction with the world famous 'Prehistoric Times Magazine', to celebrate WonderFest 2016. As you can see from the photographs the textures and structures of the original Aurora Giant Tyrannosaurus Rex have been faithfully reproduced on the smaller dinosaurs. This makes them an exact match for the original kit and the layout in general. Also included is a mammoth single piece modular terrain base complete with eggs, ferns and a small palm tree.



This kit contains a full set of comprehensive instructions to aid you with the construction of the kit. A limited number also include a bonus comic book . It will be sold at Wonderfest in the first instance but is also available to order from the website, directly from Mark or in the near future through our e-bay site.

These complex moulds won't last forever and we cast as long as the moulds are in good condition.

ITEM O35 Jungle Swamp Nameplate.

An original 'Aroara' product for use with Aurora Prehistoric Scenes Jungle Swamp \$12.00



The Jungle Swamp was the only original kit on the layout without a nameplate. Now you can have one anyway. 'Prehistorix' presents an 'Aroara' original. Designed by the same company that brought you the leaping sabre-tooth this will complete your layout. This time it comes complete with a 'Prehistorix' nameplate holder to display it at its best.

ITEM O36 Rhamphorynchus (2)

A recast form the original Jungle Swamp part for use anywhere on the layout . \$10.00

An exact replica of the jungle swamp pterodactyl. Now the skies above your layout can be populated by flocks of these needle toothed creatures.

These little critters come in a bargain bag of two. With a bowl of hot water and a gentle touch, it is possible to reposition the wings and tails of these wee beasties to add a little variety to your sky-scape. They are supplied complete with a rock base and clear support rod for each pterosaur so they can roam the layout unchecked.



ITEM O37 Eohippus Carcass.

A reboot of the original Jungle Swamp part for use anywhere on the layout . \$6.00



Prehistorix presents a 'Jungle Swamp' Eohippus in a state of repose.

This small creature was the first fossil to resemble the modern horse. Instead of hooves the creature had four toes and was small enough to avoid the large predators of the Eocene. The apex predators of the time were terror birds. The Giant Bird of the Prehistoric Scenes layout being a prime example. Designed to be placed on a range of bases to enhance the scenes, this could be used anywhere you wish, such as the Giant Bird, Jungle Swamp, Sabre Tooth, Tar pit and The cave.